



Air Conditioning Systems – Office Application Ceiling Fan Coil Unit Type VDC

Views of unit



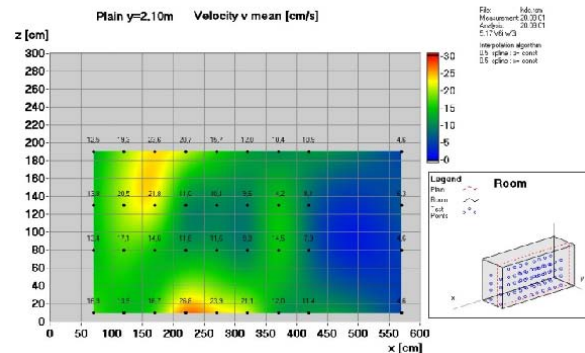
Features

- **VDC to supplement the induction unit type HDC** of the same look.
- Optimized for **cooling office rooms**.
- Designed for installation in **band grid ceilings of low height**, overlap or non-overlap.
- **Combined air inlet / air outlet grille** (as shown) **not requiring any additional return air grilles** or shadow joints.
- Coloring according to RAL.
- **Controlled indoor air flow** even in case of varying loads.
- **High cost-effectiveness** due to small water volumes.
- **High comfort** due to low air speeds and very low sound power levels with high cooling capacity.
- **Control** through fan speed and water side by valves (accessory).
- **Great variety of LTG accessories**, among others control units, valves, flexible tubes etc.

Special features



Room air flow technology. Visualization possible in the LTG lab (LTG Engineering Services)



Capture of measuring data (example) as part of the LTG Engineering Services

LTG Auslegungstabelle Deckenventilator-konvektor VDC

projektierte Leistung für Auslegungsfall

Kühlfall: Ansaugtemperatur: 26 °C
Wasservorlauftemperatur: 16 °C

Heizfall: Raumtemperatur: - °C
Wasservorlauftemperatur: - °C

Projekt: _____ Datum: _____
earbeiter: _____

VDC-02 1000

2-Leiter-System Kühlen

Auswahl	n	V [m³/h]	L _{WA} [dB(A)]	L _{MA} [dB(A)]	Q _{koem} [kW]	t _{qWR} [°C]	Q _H [kW]	t _{qWR} [°C]	W _{ak} [kg/h]
<input type="checkbox"/>	1	200	23	29	350	17,5			
<input type="checkbox"/>	2	290	32	38	480	18,1			
<input type="checkbox"/>	3	350	39	45	560	18,4	Heizen nicht implementiert		200
<input type="checkbox"/>	4	420	44	50	620	18,7			
<input type="checkbox"/>	5	450	49	55	660	18,8			

Nennwassermenge für 100 % Kühlleistung: 200

Dimensioning using specific LTG programs